

# SM-2402/04C Multiport Programmable Bypass Switch



## SPECIFICATIONS:

### Standards:

IEEE 802.3u 100BaseTX,  
802.3 10BaseT and 802.3z  
1000BaseTX, Fully RoHS  
Compliant

### Connectors:

Four RJ45 Twisted Pair per  
Port, Jacks: One Router, Two  
Server (Appliance), One  
Switch, DB9 RS-232  
Terminal, USB Port, 2 3-Wire  
110/220V AC Power

### Power:

Two 100-120/200-240V AC  
0.50/0.25A 50-60Hz  
Autosensing Internal Power  
Supplies

### Warranty:

1 Year Parts and Labor

### Approvals:

UL (on Power Supply), FCC  
Part 15 Class A Compliant,  
CE, CB

Size: 19.0"L x 12.0"W x  
1.75"H

### Weight:

2 Port: 7.0 lbs 9.2 oz  
4 Port: 7.0 lbs 15.4 oz

## CONTACT:

Telephone:  
732-870-0800

Toll Free:  
1-800-600-9656

Fax:  
732-870-1912

Postal Address:  
45 Memorial Parkway  
Long Branch, New Jersey  
07740  
United States of America

Support:  
support@shoremicro.com

Information:  
info@shoremicro.com

Sales:  
sales@shoremicro.com

Web Address:  
www.shoremicro.com

## PRODUCT DESCRIPTION:

The SM-2402/04C Multiport Programmable Bypass Switch provides the ability to automatically bypass a malfunctioning network appliance. The unit operates in a standalone mode or as an intelligent watchdog that expects periodic interaction with a properly-functioning network appliance via a serial communication link. In the event of a failure, the unit removes the failing device from the Ethernet link. After bypassing (removing) the failing device, the SM-2402/04C directly connects the two external Ethernet ports to reestablish end-to-end communications. The unit is available in several configurations for end-user or OEM applications.

## FEATURES:

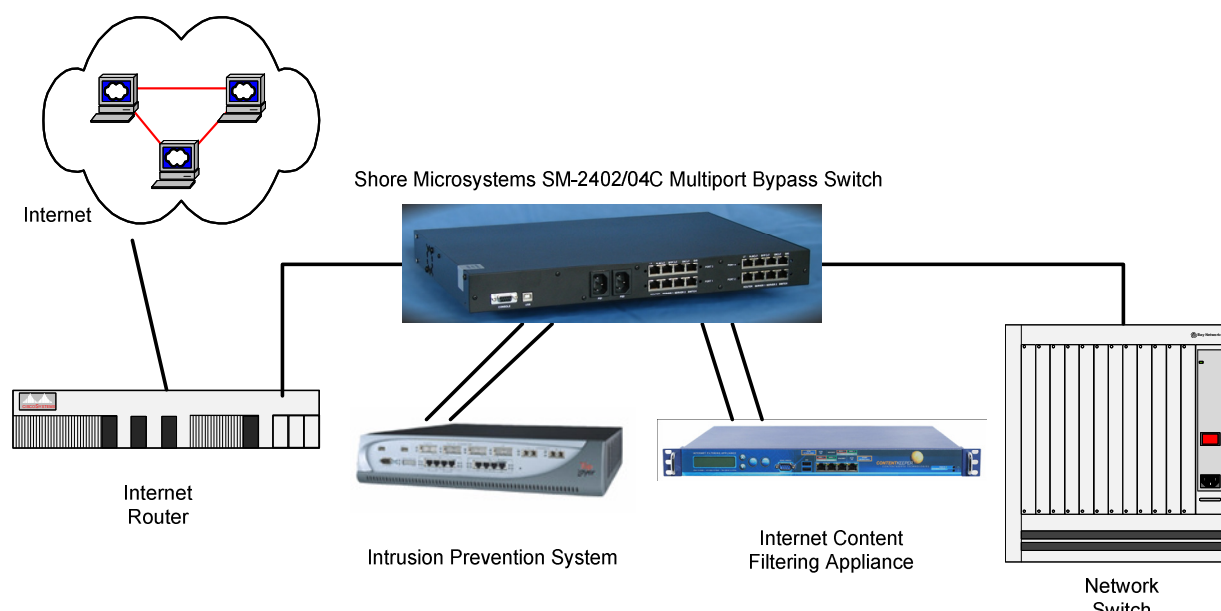
- ◆ Patented Design Quickly Bypasses Failed 2 or 4 Port Group Network Appliances
- ◆ Independent Watchdog Function Responds to Link and System Failures
- ◆ Completely Transparent to Ethernet Link Traffic
- ◆ Simple Control Interface via Serial or USB Connection
- ◆ Maintains End-to-End Connectivity thru Power Failures
- ◆ Programmable Switchover Delays
- ◆ Flash Firmware Upgradeable
- ◆ Supports Gigabit Copper (1000BaseT) Ethernet
- ◆ 1U Chassis with Redundant Power

## APPLICATIONS:

- ◆ Provide Backup for Critical Links to Servers, Routers, and other Vital Equipment
- ◆ Protect Against Failures of Primary Link Due to Cable Cuts, Disconnected Cables, and Hub Failures from Malfunctioning Ports, Plug-in Cards, or Power Supplies

## FAILURE DETECTION/ DESIGN FEATURES:

The SM-2402/04C will switch upon failure either by detecting a loss of signal, loss of power or loss of watchdog communications. By constantly monitoring link signal, the SM-2402/04C can automatically switch to the Bypass State on loss of signal. With the use of a custom script providing watchdog refresh commands and the RS-232 console capabilities, the SM-2402/04C will switch on failure of attached appliance. The SM-2402/04C is compatible with scripts written for any OS and can be designed to switch to bypass using either a simple loss of script or more elaborate definition of appliance malfunction. The bypass device does not add a single point of failure to the network. By incorporating Shore Microsystems's "Straight Through Wire"™ Technology into the SM-2402/04C Programmable Bypass Switch, the device is completely transparent to the network, therefore is independent of network protocols.



Copyright © 1985-2012 Shore Microsystems, Inc © All Rights Reserved

www.shoremicro.com



