

# SM-2501POE Ethernet Link Protector/ Failover Switch (Power Over Ethernet)

## SPECIFICATIONS:

**Standards:** IEEE 802.3af  
Complaint, Fully RoHS  
Compliant

**Connectors:** Three RJ45  
Twisted Pair

**Jacks:** One Primary, One  
Backup, One Direct Station  
Connection (Server Port);  
One 3.5mm Alarm Contact  
Jack; One 12V DC Power  
48V, 1W, Optional 12V  
300ma

**Size:** 4.3"L x 2.8"W x 1.0"H

**Weight:** 6.1 oz

**Approvals:** UL (on Power  
Supply), FCC Part 15 Class A  
Compliant

**Warranty:** 1 Year Parts and  
Labor

## CONTACT:

Telephone:  
732-870-0800

Toll Free:  
1-800-600-9656

Fax:  
732-870-1912

Postal Address:  
45 Memorial Parkway  
Long Branch, New Jersey  
07740  
United States of America

E-mail:

Support:  
support@shoremicro.com

Information:  
info@shoremicro.com

Sales:  
sales@shoremicro.com

Web Address:  
www.shoremicro.com



## PRODUCT DESCRIPTION:

The SM-2501P Gigabit Ethernet Link Protector provides a programmable automatic link backup capability to "mission-critical" 10/100/1000BaseT Ethernet links. The SM-2501P protects vital connections to servers, routers, and other key Ethernet devices that require fail-safe link operation. The SM-2501P operates by non-intrusively monitoring a "primary" link and, in the event of a failure, automatically switching to the backup link. The Link Protector does not require any additional network cards in a server and does not require router-level switch-over if a failure occurs. The backup link can be connected to either another port on a switch or an entirely different switch altogether for greater protection. The unit is powered from the Ethernet connection on the Primary or Backup link and is compatible with IEEE 802.3af standard, eliminating the need for a local power supply. The SM-2501P can also pass power to the protected device, thus providing a simple solution for adding redundancy to IP phones, Wireless Access Points, and other PoE powered devices.

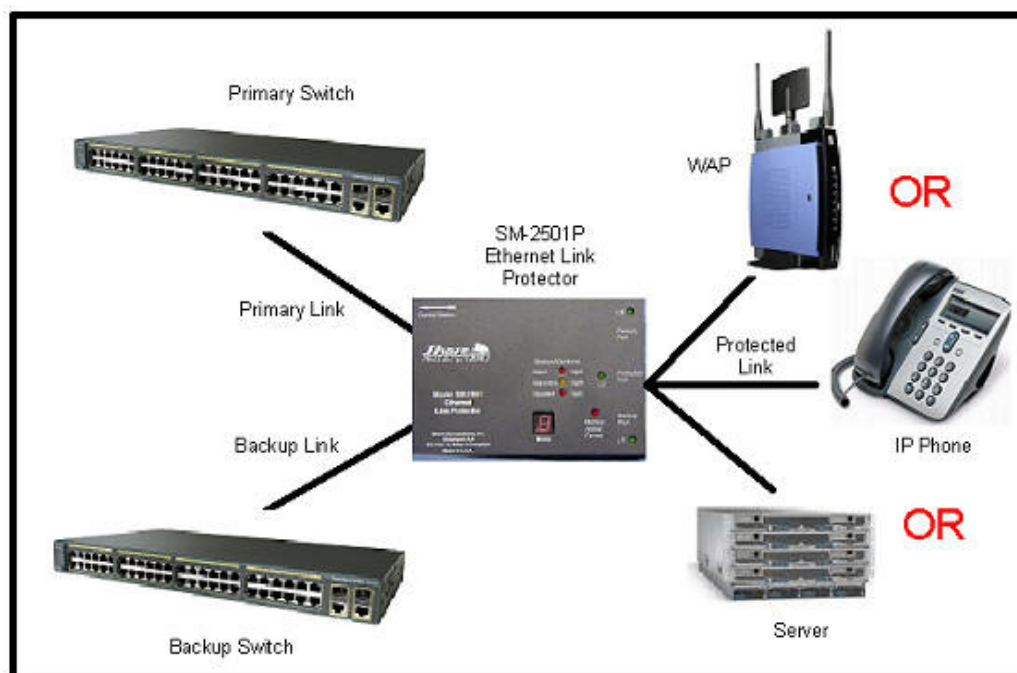
## FEATURES:

- ◆ Automatic Switching to Backup Link Can Be Programmed To Occur Within 100 to 1100 Milliseconds to Avoid Protocol-Timeouts
- ◆ Fast Switchover Option
- ◆ Programmable Switchover Delays
- ◆ Automatic Switch-Back to Primary Link on Restoration of Service
- ◆ Supports Autonegotiation for 10/100BaseT/1000BaseT
- ◆ Completely Transparent in Normal Operation - Does Not Affect IEEE Repeater Budget Calculations
- ◆ Audible Alarm and Contact Closure Output for Link Failure Notification
- ◆ Default Connection to Primary Link in Case of Power Interruption
- ◆ Outbound Generation of Link Integrity Signals to avoid False Alarms on Inactive Links
- ◆ Jumperless System Configuration Stored in Non-Volatile Memory
- ◆ Manual Override for Forced Switching
- ◆ Multiple LED Indicators for Status Display

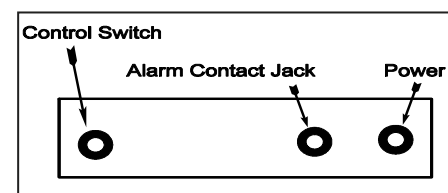
## APPLICATIONS:

- ◆ Provide Backup for Critical Links to Servers, Routers, and other Vital Equipment
- ◆ Protect Against Failures of Primary Link Due to Cable Cuts, Disconnected Cables, and Hub Failures from Malfunctioning Ports, Plug-in Cards, or Power Supplies
- ◆ Provides Backup for IP Phones and Remote Wireless Access Points

Network Diagram



Power and Alarm Output Connections



## ADDITIONAL FEATURES:

- Supports Class 0 or Class 1 Powered Device (PD) Operation
- IEEE 802.3af Complaint, Eliminates Need for Local Power Supply
- Power Pass Through to Protected Device, up to 12 Watts
- Optional Local 12V Power Supply Operation